

Kiyo Grandeur

New
— Gen
Homes



16 Opulence Street, Lake Treeby

 4  2  2

 newgenerationhomes.com.au

 [@newgenhomes_](https://www.instagram.com/newgenhomes_)

 [@newgenerationhomes](https://www.facebook.com/newgenerationhomes)

Powered by  **SUMMIT**

Kiyo Grandeur ***Where modern Japandi*** ***living unfolds***

With an exquisite blend of Japanese artistic elements and Scandinavian comfort, this home offers an inviting and soothing ambience, perfect for those seeking a modern yet homely living space.

The Kiyo Grandeur is a bold testament to a lifestyle of sophistication and contemporary finesse. Envelop yourself in the inviting ambience, where every corner reflects a careful curation of quality and warmth.

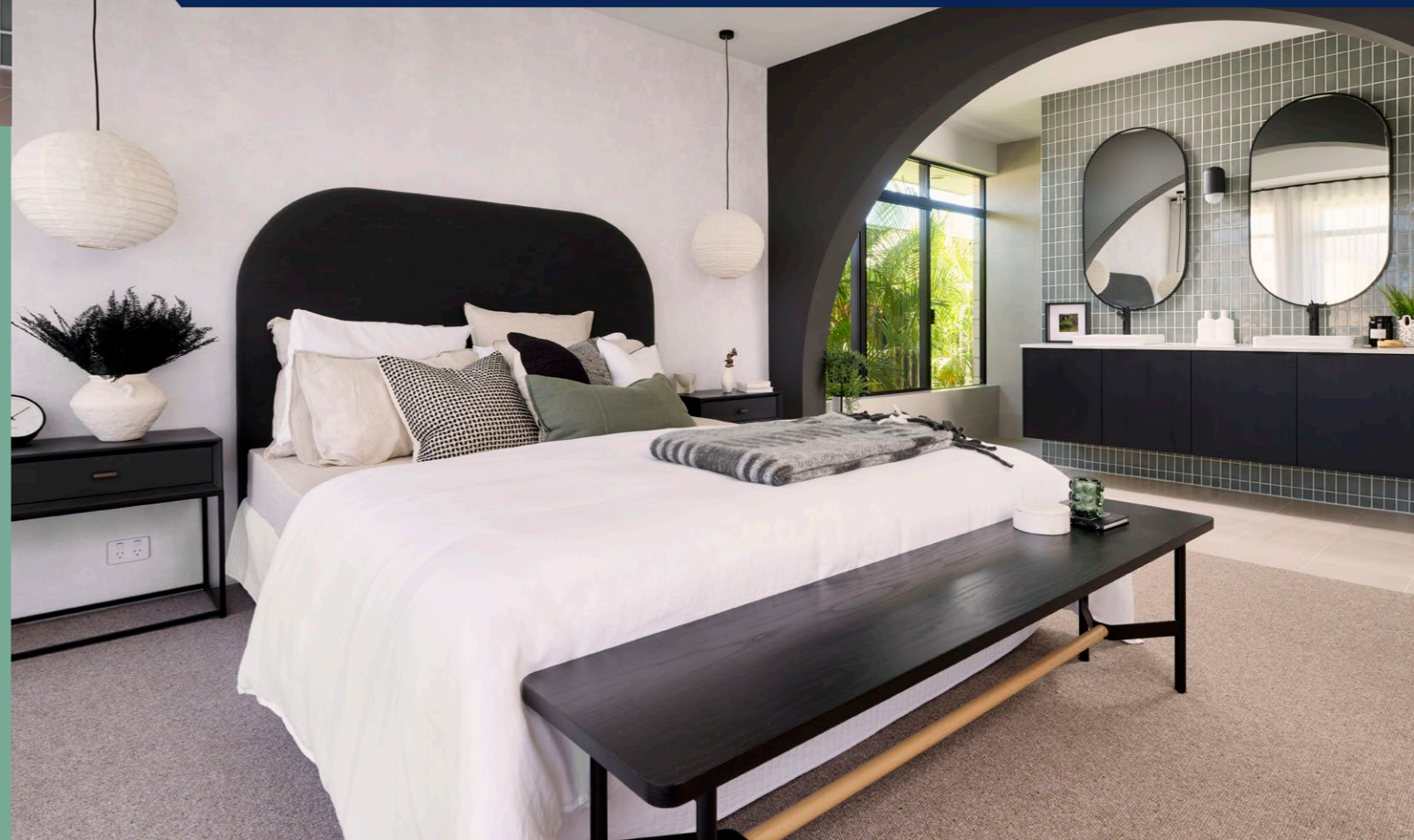
Discover the expansive living room with large windows and the subtle elegance of the recessed ceiling, seamlessly merging minimalist charm and sophistication.

Immerse yourself in the spacious kitchen, accompanied by a functional scullery that beckons the inner culinary enthusiast.

Unwind in the luxurious main bedroom with its exclusive ensuite, accessible through a unique inviting arched doorway.

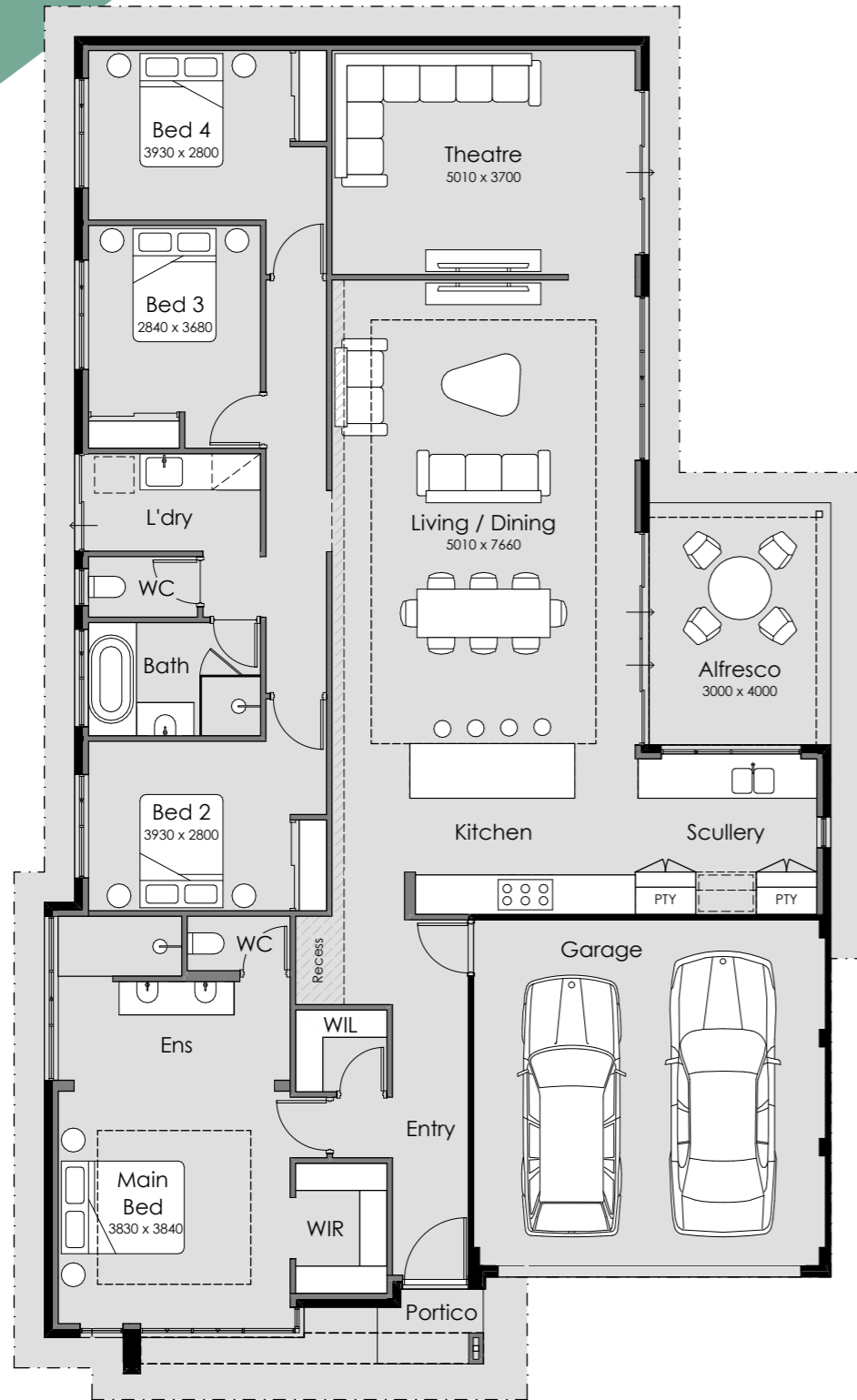


Delight in the spacious kitchen and
lavish main bedroom with an arched doorway



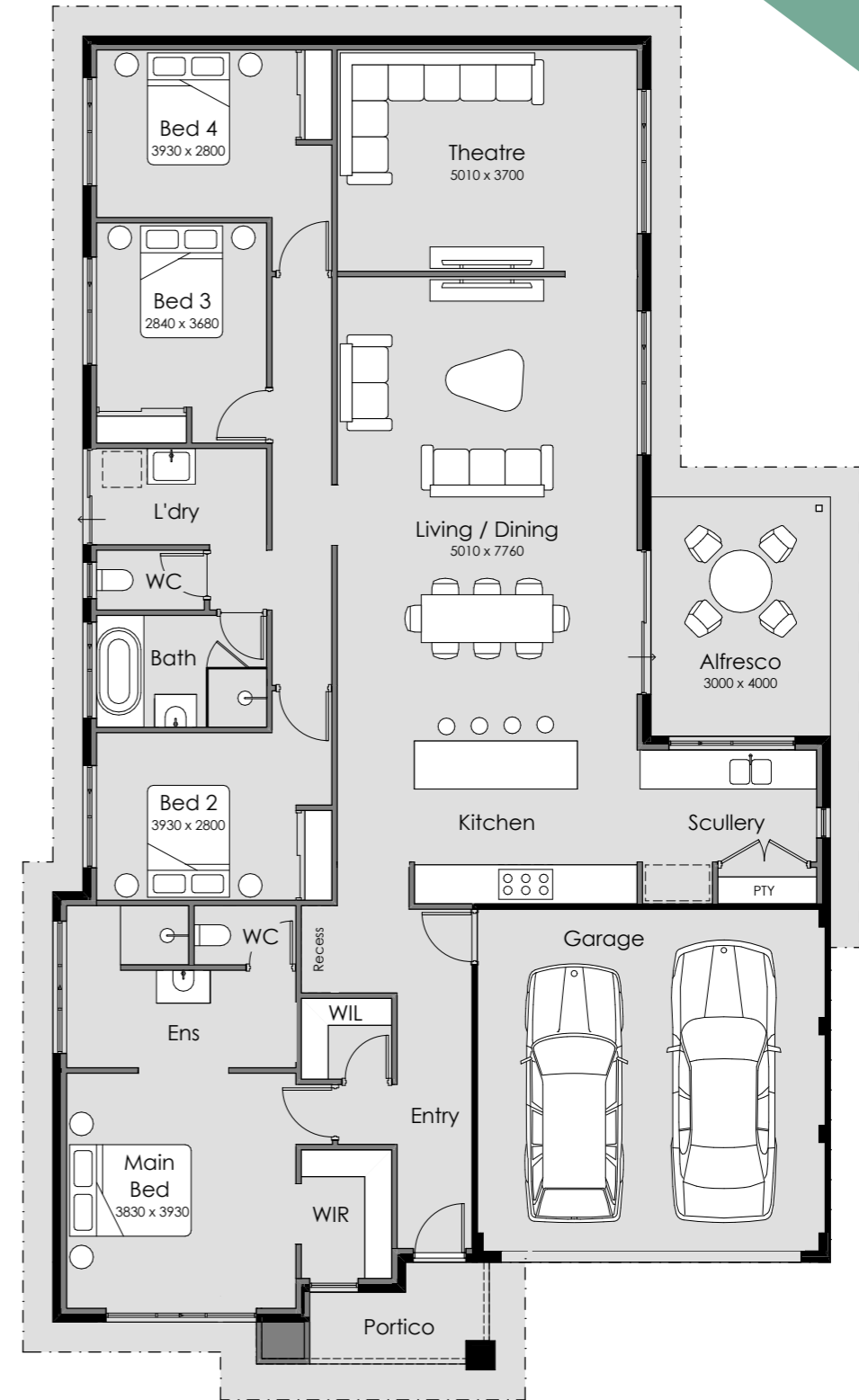
Kiyo Grandeur

Overall Width – 12.99m
Overall Length – 22.09m
Min Block Width – 15m*
Min Block Length – 25m*
Total Area – 243.33m²



Kiyo

Overall Width – 12.99m
Overall Length – 22.29m
Min Block Width – 15m*
Min Block Length – 25m*
Total Area – 245.16m²

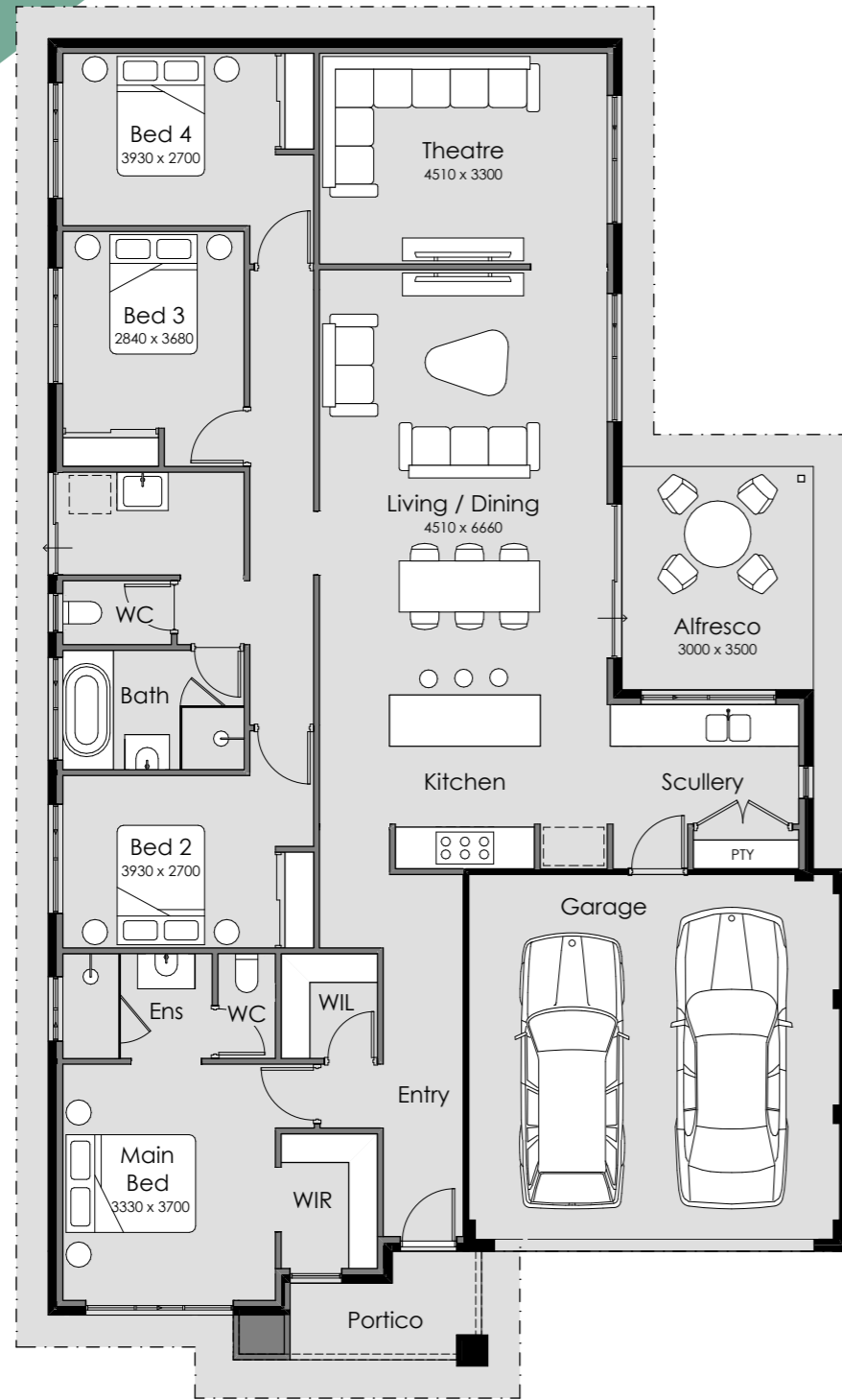


*Block dimensions are indicative only, as per site-specific requirements.

*Block dimensions are indicative only, as per site-specific requirements.

Kiyo Adore

Overall Width – 12.49m
Overall Length – 20.79m
Min Block Width – 15m*
Min Block Length – 25m*
Total Area – 219.28m²



Beautifully built, spacious homes

As a local Perth home builder powered by Summit Homes Group, we are dedicated to building high-quality designs that blend style and functionality while encouraging elevated living.



A seamless build experience

Finding the perfect home builder is as much about the building experience as it is about your beautiful home at the end.

We take pride in offering you a seamless experience throughout the build process. From start to finish, our team is committed to making your journey exciting and stress-free.



You will love



Space

A space that is yours. Space to unwind, entertain, grow and connect. A home designed for the flow of your life as it grows and transforms.



Transparency

You are at the heart of everything we do, from design to build and all the way to move-in day. We will be with you every step of the way.



Value

Quality construction, built with locally sourced products, so you can be proud of your investment.

The Kiyo Grandeur is built using our BrickHybrid method, meaning brick on the outside and frames made from TRUECORE® steel with insulation on the inside. This building method provides the best thermal comfort all year round and is the most effective for blocking out sound. Ask us for more information on building your new home using BrickHybrid.

 newgenerationhomes.com.au

 @newgenhomes_

 @newgenerationhomes

Proud Supplier of
Truecore®

**New
- Gen
Homes**