

Forestedge Grandeur

New
— Gen
Homes



6 Serpentine Road, Baldivis



 newgenerationhomes.com.au

 [@newgenhomes_](https://www.instagram.com/newgenhomes_)

 [@newgenerationhomes](https://www.facebook.com/newgenerationhomes)

Powered by  **SUMMIT**

Forestedge Grandeur

Where practicality meets spacious luxury

The Forestedge Grandeur is designed for modern living with a focus on practicality, offering a spacious and functional layout. Its intelligent floorplan combines convenience with style, ensuring that every space is both functional and inviting.

In addition to the wide entry hall, the home features a convenient entrance from the garage, allowing access to either the hallway or directly to the scullery – a standout detail that adds both practicality and ease.

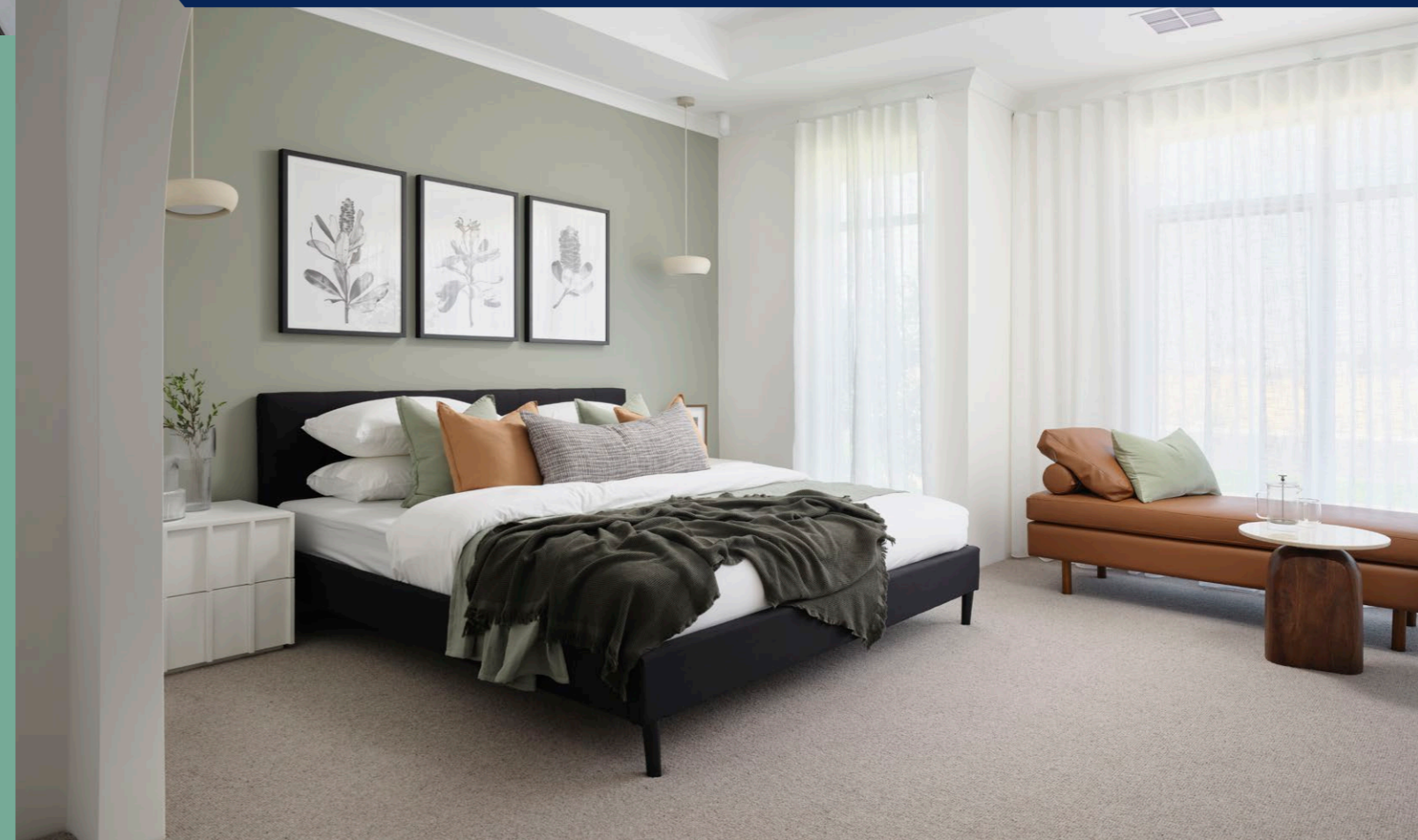
At the heart of the home, the kitchen includes a large island and flows seamlessly into a dedicated scullery, making meal prep and storage effortless. The open-plan living area is flooded with natural light, extending into a generous alfresco space — perfect for outdoor entertaining.

The master suite, located at the front of the home, is a true retreat, featuring a luxurious ensuite with an elegant archway and a unique glass wall separating the shower from the walk-in robe. The children's wing, located at the rear, offers privacy, while the theatre room provides an ideal space for family fun.

The garage also includes generous storage, perfect for tools or a small workspace.

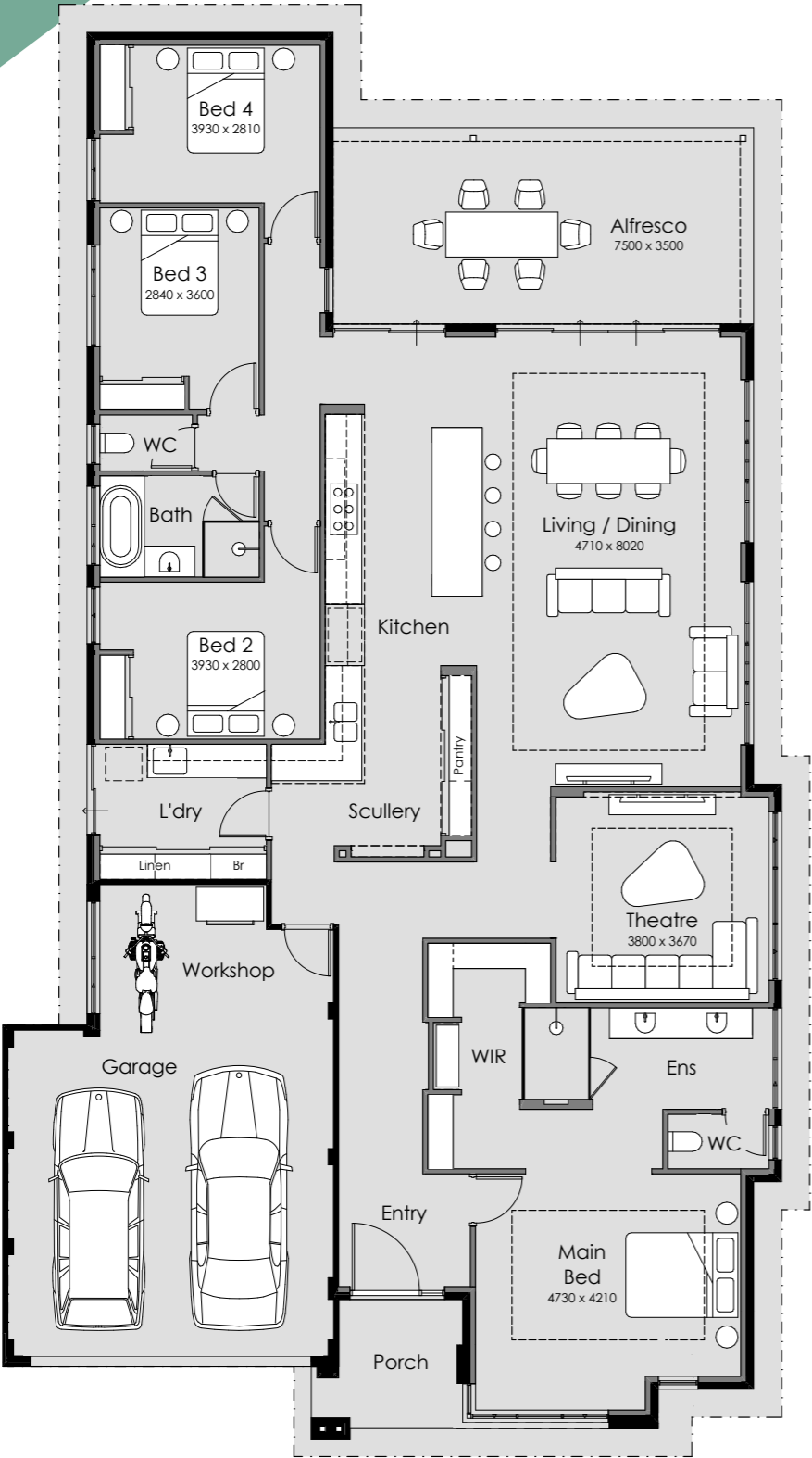


***Enjoy the flow of the open-plan living space,
or unwind in the tranquil master suite.***



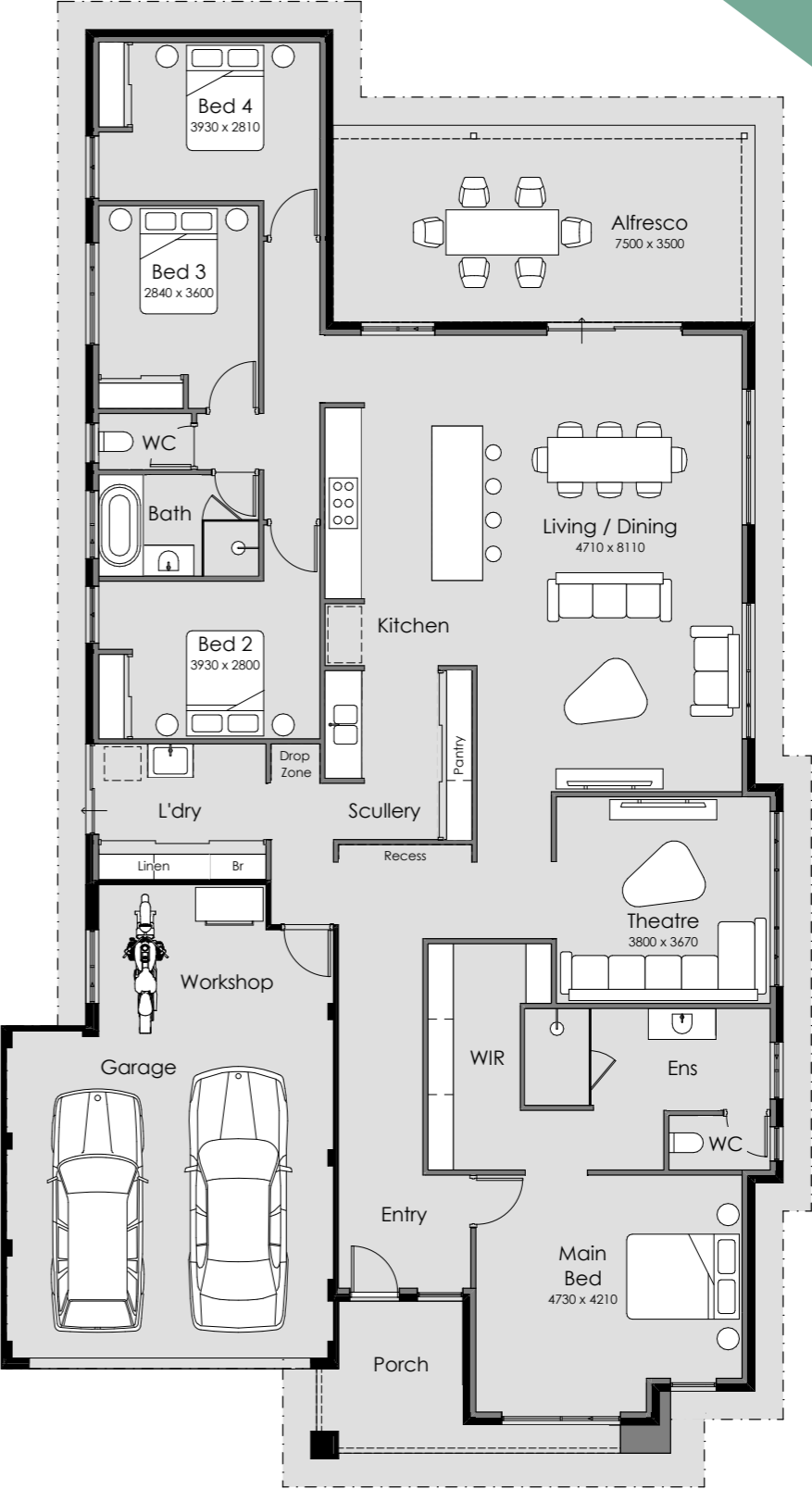
Forestedge Grandeur

Overall Width – 13.89m
Overall Length – 25.09m
Min Block Width – 15m
Min Block Length – 30m
Total Area – 290.42m²



Forestedge

Overall Width – 13.89m
Overall Length – 25.39m
Min Block Width – 15m
Min Block Length – 30m
Total Area – 292.92m²



*Block dimensions are indicative only, as per site-specific requirements.

*Block dimensions are indicative only, as per site-specific requirements.

Forestedge Adore

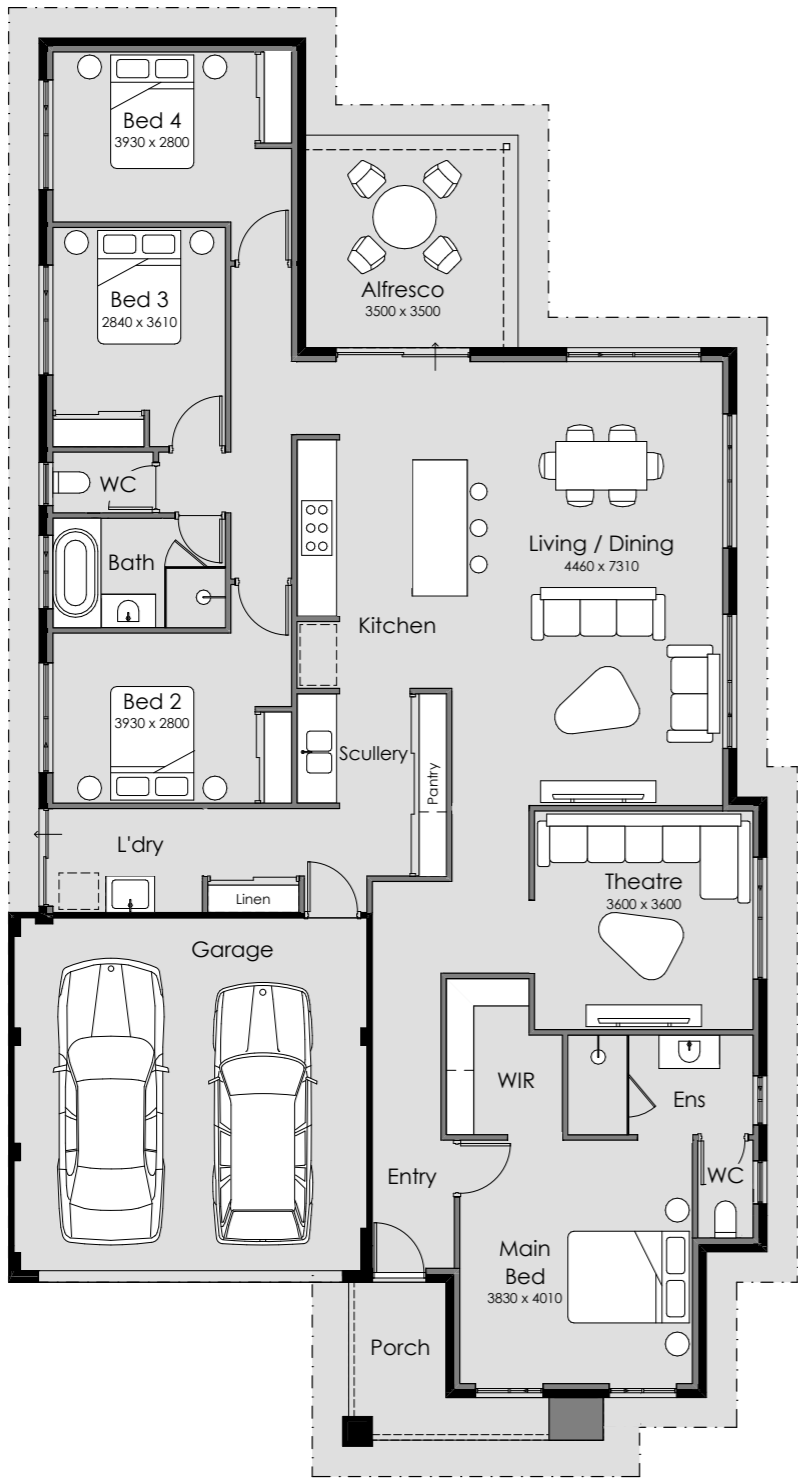
Overall Width – 12.49m

Overall Length – 23.19m

Min Block Width – 15m

Min Block Length – 30m

Total Area – 232.23m²



Beautifully built, spacious homes

As a local Perth home builder powered by Summit Homes Group, we are dedicated to building high-quality designs that blend style and functionality while encouraging elevated living.



A seamless build experience

Finding the perfect home builder is as much about the building experience as it is about your beautiful home at the end.

We take pride in offering you a seamless experience throughout the build process. From start to finish, our team is committed to making your journey exciting and stress-free.



You will love



Space

A space that is yours. Space to unwind, entertain, grow and connect. A home designed for the flow of your life as it grows and transforms.



Transparency




You are at the heart of everything we do, from design to build and all the way to move-in day. We will be with you every step of the way.



Value

Quality construction, built with locally sourced products, so you can be proud of your investment.

The Forestedge Grandeur is built using our BrickHybrid method, meaning brick on the outside and frames made from TRUECORE® steel with insulation on the inside. This building method provides the best thermal comfort all year round and is the most effective for blocking out sound. Ask us for more information on building your new home using BrickHybrid.

 newgenerationhomes.com.au
 [@newgenhomes_](https://www.instagram.com/newgenhomes_)
 [@newgenerationhomes](https://www.facebook.com/newgenerationhomes)

Proud Supplier of
Truecore®

**New
 Gen
 Homes**