

Bayside Grandeur

New
— Gen
Homes



12 Karijini Loop, Clarkson



4



2



2



newgenerationhomes.com.au



[@newgenhomes_](https://www.instagram.com/newgenhomes_)



[@newgenerationhomes](https://www.facebook.com/newgenerationhomes)

Powered by  **SUMMIT**

Bayside Grandeur

Where modern aesthetics meet elegant Hamptons charm

Welcome to the Bayside Grandeur, where modern aesthetic and elegant Hamptons design come together to create a home that feels both refined and inviting.

As you enter through the grand foyer, the spacious layout unfolds with four generously sized bedrooms, a dedicated theatre, and a flexible multi-purpose room – offering over 287 square meters of living space to perfectly suit your family's needs.

The dark timber-look flooring contrasts beautifully with the light-filled interiors, striking the perfect balance of warmth and timeless design.

Grand double doors lead to the main bedroom, a private retreat complete with a spacious walk-in robe and a stylish ensuite featuring terrazzo tiles and a double vanity — the perfect blend of modern design and comfort.

Two of the minor bedrooms also feature walk-in robes, with one offering a dedicated study nook.

At the heart of the home, the open-plan kitchen and living area showcases a large island, scullery, and walk-in pantry, merging style with practicality. A dedicated bar enhances the space for entertaining, while the living area flows seamlessly into the alfresco, creating the ultimate indoor-outdoor experience.

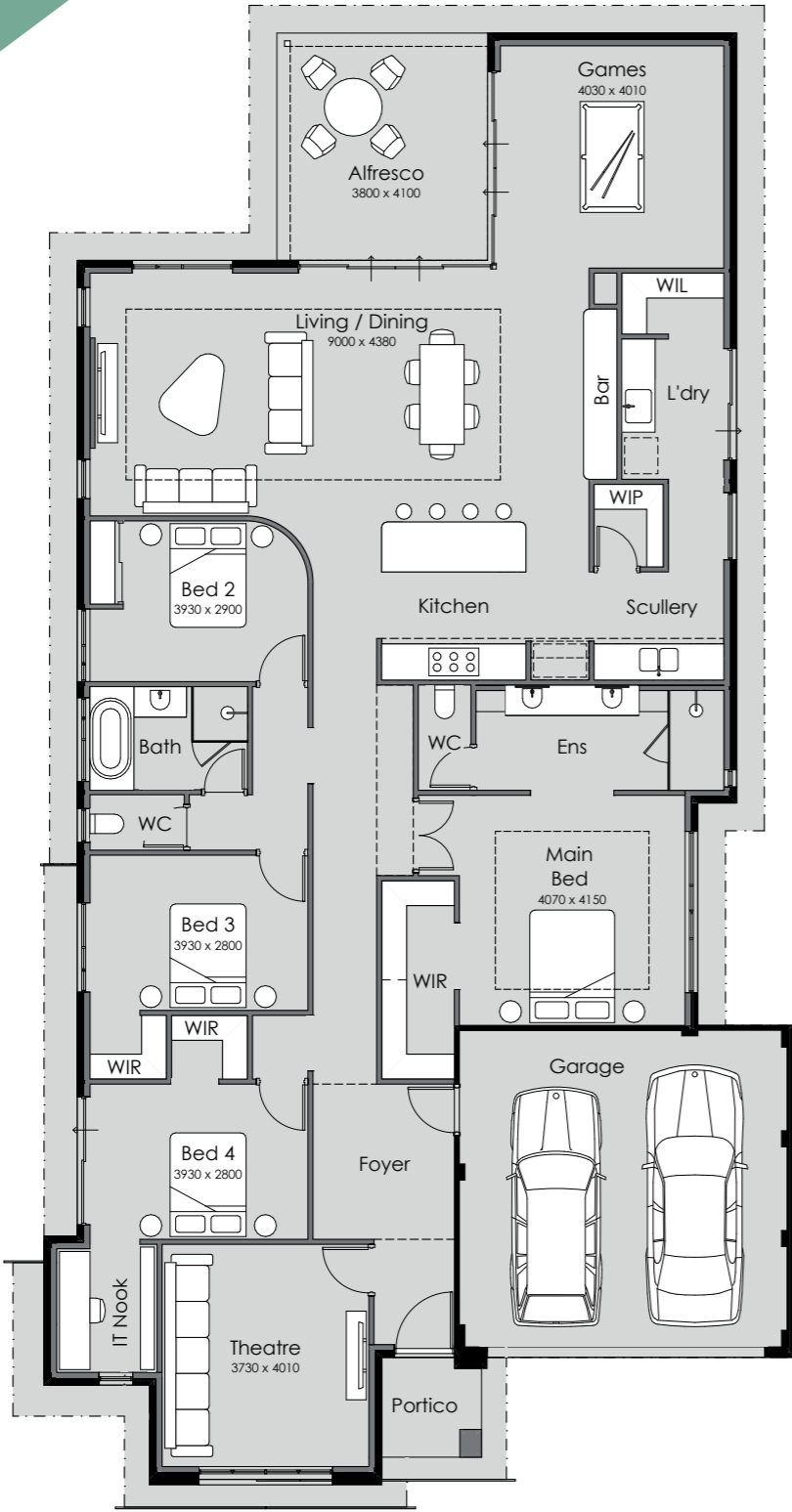


Enjoy the expansive open-plan living space, or escape to the stylish main bedroom.



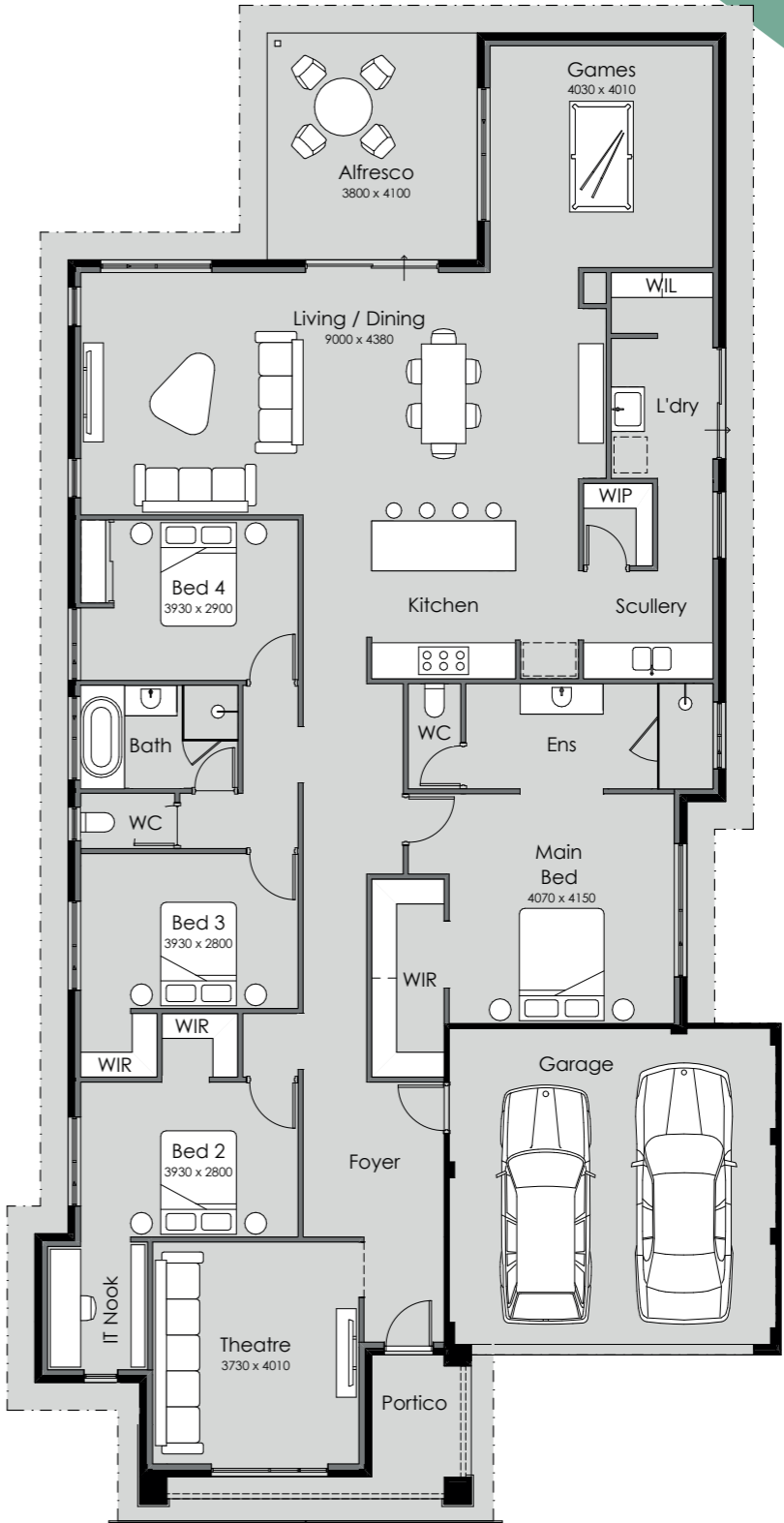
Bayside Grandeur

Overall Width – 13.49m
Overall Length – 26.19m
To Suit Block Width – 15m
To Suit Block Length – 30m
Total Area – 287.13m²



Bayside

Overall Width – 13.49m
Overall Length – 26.59m
To Suit Block Width – 15m
To Suit Block Length – 30m
Total Area – 290.31m²

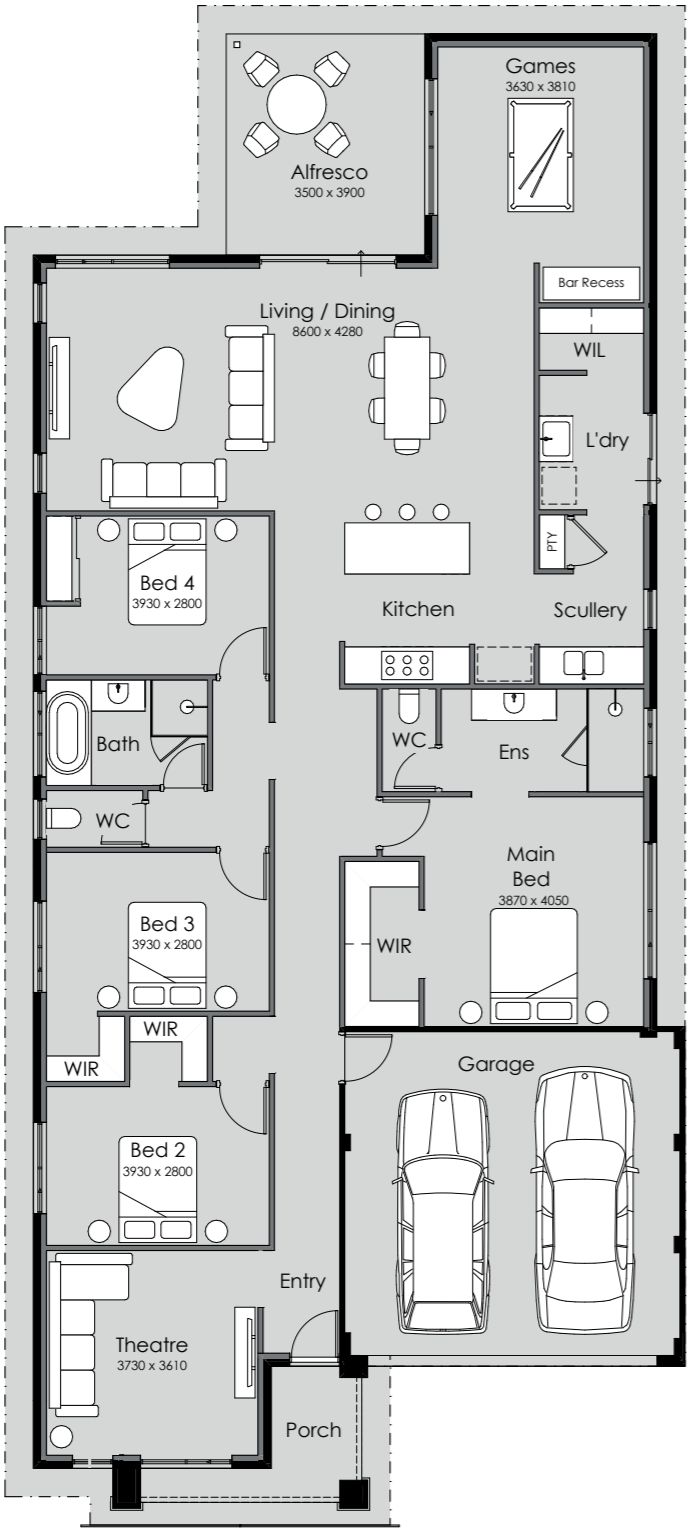


*Block dimensions are indicative only, as per site-specific requirements.

*Block dimensions are indicative only, as per site-specific requirements.

Bayside Adore

Overall Width – 11.49m
Overall Length – 25.99m
To Suit Block Width – 15m
To Suit Block Length – 30m
Total Area – 261.11m²



Beautifully built, spacious homes

As a local Perth home builder powered by Summit Homes Group, we are dedicated to building high-quality designs that blend style and functionality while encouraging elevated living.



A seamless build experience

Finding the perfect home builder is as much about the building experience as it is about your beautiful home at the end.

We take pride in offering you a seamless experience throughout the build process. From start to finish, our team is committed to making your journey exciting and stress-free.



*Block dimensions are indicative only, as per site-specific requirements.



You will love



Space

A space that is yours. Space to unwind, entertain, grow and connect. A home designed for the flow of your life as it grows and transforms.



Transparency




You are at the heart of everything we do, from design to build and all the way to move-in day. We will be with you every step of the way.



Value

Quality construction, built with locally sourced products, so you can be proud of your investment.

The Bayside Grandeur is built using our BrickHybrid method, meaning brick on the outside and frames made from TRUECORE® steel with insulation on the inside. This building method provides the best thermal comfort all year round and is the most effective for blocking out sound. Ask us for more information on building your new home using BrickHybrid.

 newgenerationhomes.com.au
 [@newgenhomes_](https://www.instagram.com/newgenhomes_)
 [@newgenerationhomes](https://www.facebook.com/newgenerationhomes)

Proud Supplier of
Truecore®

**New
 Gen
 Homes**